

# AI-POWERED SMART CLASSROOM MONITORING AND ATTENDANCE SYSTEM USING FACE RECOGNITION

GARIKINA LAKSHMI KANTH

Reg. No. 24Q71F0016

[luckyakshmikanth152@gmail.com](mailto:luckyakshmikanth152@gmail.com)

Department of Master of Computer Applications  
Avanthi Institute of Engineering and Technology (Autonomous)  
Vizianagaram, Andhra Pradesh, India

*Under the guidance of Associate Professor Mr. S. KESAVA RAO, Ph.D*

[kesav546@gmail.com](mailto:kesav546@gmail.com)

**Abstract**—This paper presents an AI-powered smart classroom monitoring and attendance system that leverages face recognition technology to automate attendance tracking and enhance real-time classroom supervision. Traditional attendance systems are manual, error-prone, and inefficient, often consuming valuable teaching time and failing to prevent proxy attendance. The proposed system addresses these issues by employing computer vision and machine learning techniques to detect and recognize student faces, thereby marking attendance automatically. Additionally, the system monitors student behavior and engagement levels using artificial intelligence algorithms. The architecture integrates various technologies such as Python, OpenCV, TensorFlow, PyTorch, and MySQL to facilitate robust performance. Testing was conducted to validate system functionality, with all test cases passing successfully. Challenges related to lighting conditions, appearance changes, and computational demands were noted. Future enhancements include integrating emotion recognition, gaze tracking, and cloud-based solutions to further improve system capabilities.

**Keywords**—Face Recognition; Smart Classroom; Artificial Intelligence; Classroom Monitoring; Attendance Automation; Behavior Analysis; Computer Vision.

## I. INTRODUCTION

In modern educational environments, efficient classroom management plays a crucial role in ensuring effective teaching and learning processes. Traditional methods of attendance tracking involve manual efforts, which are time-consuming, error-prone, and susceptible to proxy attendance. These limitations hinder both instructional quality and administrative efficiency. To overcome these challenges, this paper proposes an AI-powered smart classroom monitoring and attendance system based on face recognition technology. The system aims to automate attendance marking, eliminate human errors, and enable real-time monitoring of student behavior and engagement.

By utilizing advanced computer vision and machine learning algorithms, the system identifies students through facial features and records their presence accurately. Moreover, it offers insights into student attentiveness and classroom dynamics, supporting instructors in improving pedagogical strategies.

The integration of a centralized database allows seamless data management and reporting, contributing to enhanced institutional operations.

## II. LITERATURE SURVEY

Several foundational works have contributed to the development of automated face recognition systems. Viola and Jones introduced a boosted cascade of simple features for rapid object detection, laying groundwork for real-time face detection [1]. Turk and Pentland proposed eigenfaces for recognition, offering a mathematical approach to facial representation [2]. Ahonen et al. applied local binary patterns for face description, enhancing recognition accuracy under varying conditions [3].

Deep learning approaches like FaceNet provided unified embeddings for face clustering and verification tasks [4], while Taigman et al.'s DeepFace achieved near-human-level performance in face verification [5]. Tools such as Dlib-ml offer robust implementations of machine learning algorithms [6], and OpenCV serves as a widely adopted open-source computer vision library [7].

Comprehensive surveys by Zhao et al. [8] and Jain et al. [9] highlight advancements and challenges in face recognition and biometric systems. Kumar and Zhang explored real-time face detection using learning-based methods [10], while Szeliski detailed core principles of computer vision algorithms [11]. Goodfellow et al. presented a comprehensive overview of deep learning concepts applicable to image recognition [12].

Recent developments such as ArcFace demonstrate improvements in deep face recognition via additive angular margin loss [13]. Collectively, research in smart classrooms and AI-driven education continues to evolve, emphasizing the importance of integrating intelligent systems into academic settings [14].

## III. EXISTING SYSTEM AND PROPOSED SYSTEM

### A. Existing System

Currently, many educational institutions rely on manual attendance systems involving roll calls or handwritten registers. While straightforward to implement, these methods suffer from inefficiencies such as excessive classroom time consumption, susceptibility to human errors, and vulnerability to proxy attendance. Physical recordkeeping poses risks of data loss and retrieval difficulties. Furthermore, there is no mechanism for analyzing student behavior or generating actionable insights from attendance data.

### B. Proposed System

The proposed system employs artificial intelligence and computer vision to automate attendance tracking and monitor classroom activities. Cameras installed within classrooms capture live video feeds, which are analyzed to detect and recognize student faces. Upon successful identification, attendance is marked automatically in a centralized database. This eliminates the need for manual intervention, reduces errors, and prevents proxy attendance.

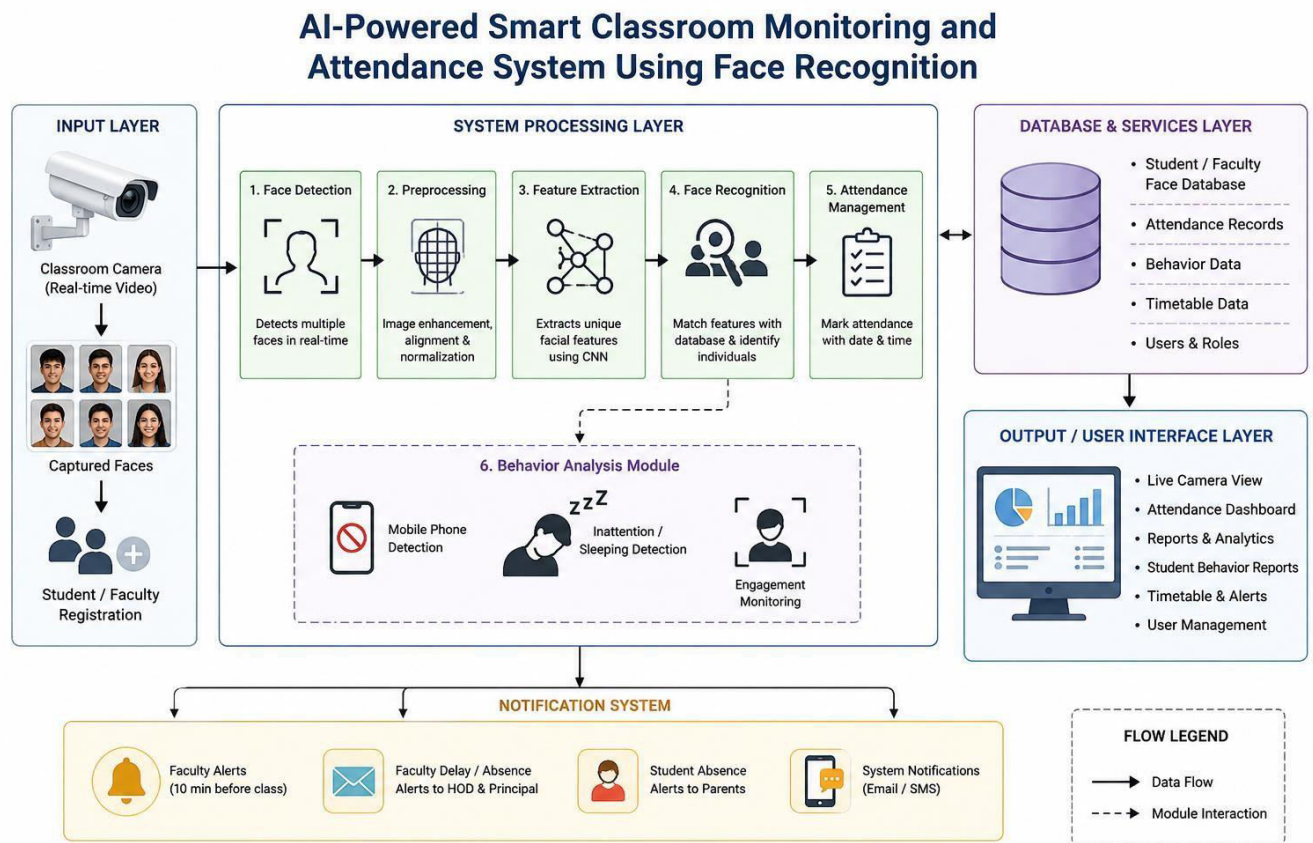
Beyond attendance, the system incorporates behavioral analysis modules that evaluate student engagement through facial expressions and attention cues. Data is securely stored and accessible via a user-friendly interface, enabling instant report generation and improved administrative workflows. The modular design supports scalability and potential integration with other educational platforms.

#### IV. SYSTEM DESIGN AND ARCHITECTURE

The system architecture consists of several interconnected components working together to achieve automated attendance and monitoring functionalities. A camera captures real-time video footage from the classroom environment. This raw visual data is transmitted to a processing unit responsible for executing face detection and recognition algorithms.

Once a student’s face is recognized against a pre-stored database, the system logs the attendance entry into a structured database. Simultaneously, the monitoring module evaluates behavioral indicators such as attentiveness and distraction levels. Finally, the collected information is displayed through a graphical user interface, providing administrators and faculty with real-time updates and analytical reports.

UML diagrams including Use Case, Class, Sequence, Activity, Component, and Deployment diagrams were developed to model different aspects of the system architecture and interactions among its components.



## V. SYSTEM IMPLEMENTATION

Implementation of the system involved leveraging multiple software libraries and frameworks known for their effectiveness in computer vision and machine learning applications. Key technologies included Python, OpenCV, NumPy, TensorFlow, PyTorch, and face-recognition toolkit. Database management was facilitated using MySQL and SQLite, while web interfaces were built using Django and Flask.

Algorithms employed for face detection and recognition encompassed Haar Cascade classifiers, Local Binary Patterns, Principal Component Analysis, Eigenfaces, Support Vector Machines, Independent Component Analysis, FaceNet, and MobileFaceNet. These methods enabled accurate and efficient identification of individuals in diverse classroom scenarios.

## VI. RESULTS AND DISCUSSION

Testing procedures covered a range of validation phases including unit testing, integration testing, functional testing, system testing, white box testing, black box testing, and acceptance testing. Each phase confirmed correct operation of individual modules and collective system behavior. All defined test cases executed without encountering defects, indicating stable and reliable system performance.

## VII. CHALLENGES AND LIMITATIONS

Despite achieving satisfactory outcomes, the system faces certain technical constraints. Variability in lighting conditions impacts the consistency of face detection and recognition. Changes in student appearances due to factors such as hairstyle or clothing can affect matching accuracy. Processing multiple faces within a single frame introduces complexity and may lead to misidentification.

Additionally, handling large datasets efficiently requires substantial computational resources. Speed limitations in real-time processing remain a concern, particularly in high-density classroom environments. Addressing these challenges necessitates ongoing refinement of algorithmic approaches and optimization of hardware configurations.

## VIII. CONCLUSION AND FUTURE SCOPE

This work demonstrates the feasibility of deploying an AI-powered smart classroom system that automates attendance and enhances behavioral monitoring. By replacing outdated manual practices with intelligent automation, the system contributes to increased teaching efficiency, reduced administrative burden, and improved data integrity.

Looking ahead, future enhancements could focus on improving recognition accuracy under adverse conditions such as low light or partial occlusion. Incorporation of advanced deep learning models, 3D face recognition, and infrared imaging may boost reliability. Additional features such as emotion recognition, gaze tracking, and predictive analytics hold promise for deeper insight into student engagement.

Integration with Learning Management Systems would allow correlation between attendance and academic performance. Development of mobile apps and adoption of cloud computing can extend

accessibility and scalability. Enhanced security measures including blockchain-based storage and stronger encryption protocols will safeguard sensitive data. Lastly, incorporating IoT sensors can provide contextual awareness about classroom environmental conditions.

Representative figures from the system are listed below:

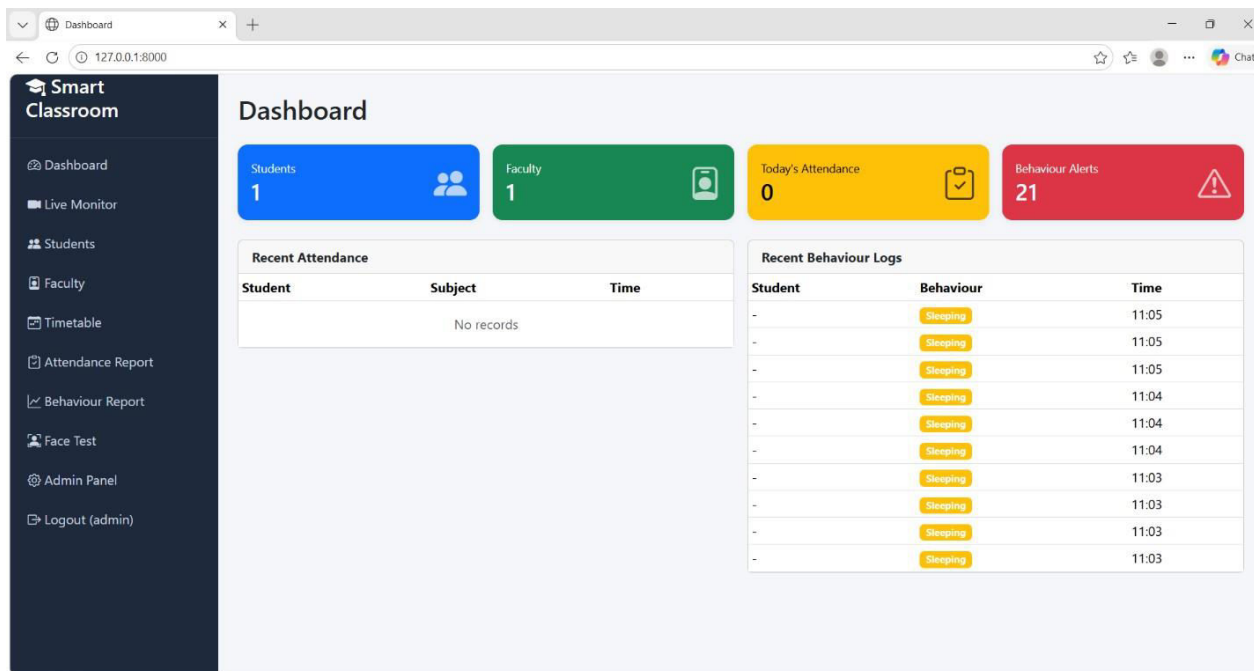


Fig. 1. Dashboard Screen

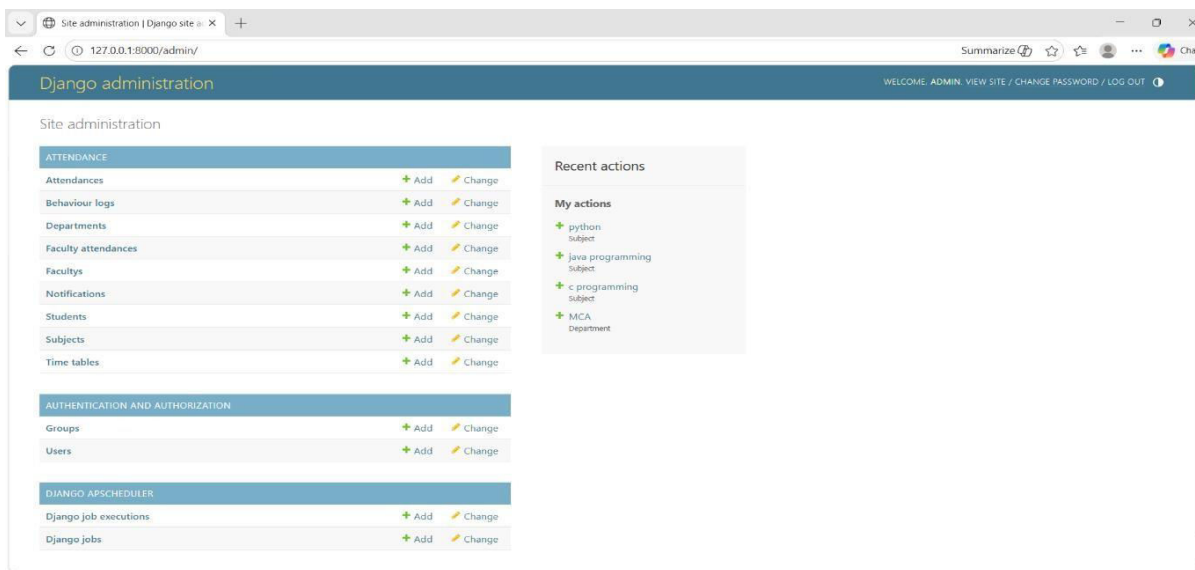


Fig. 2. Admin Panel Screen

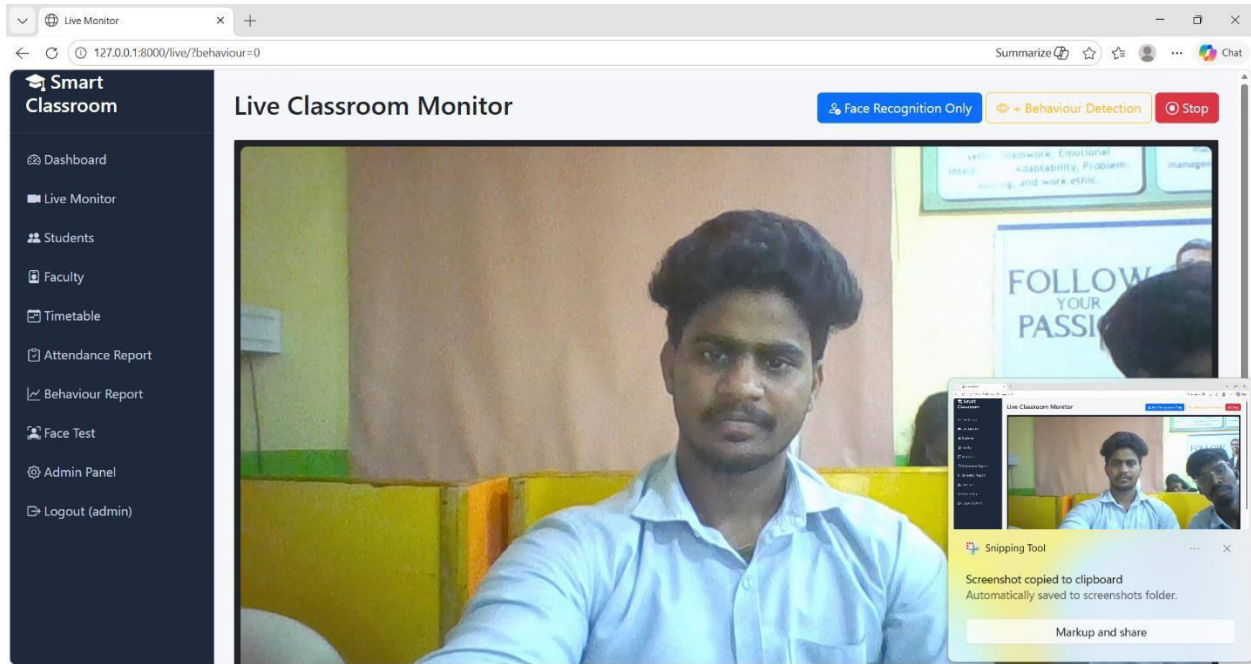


Fig. 3. Live Classroom Monitor Screen

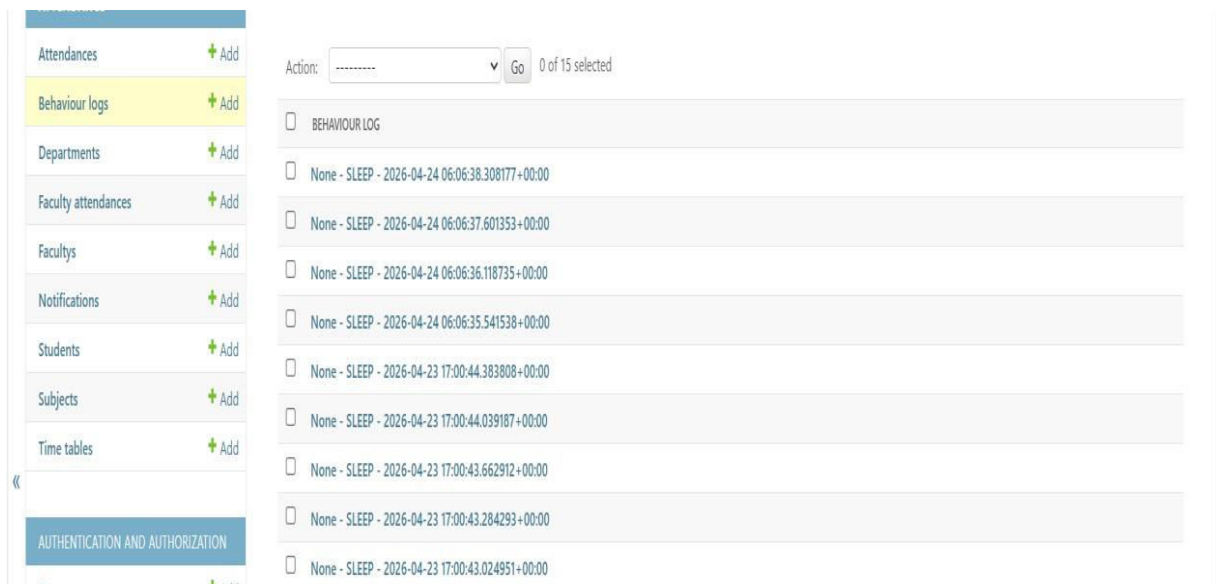
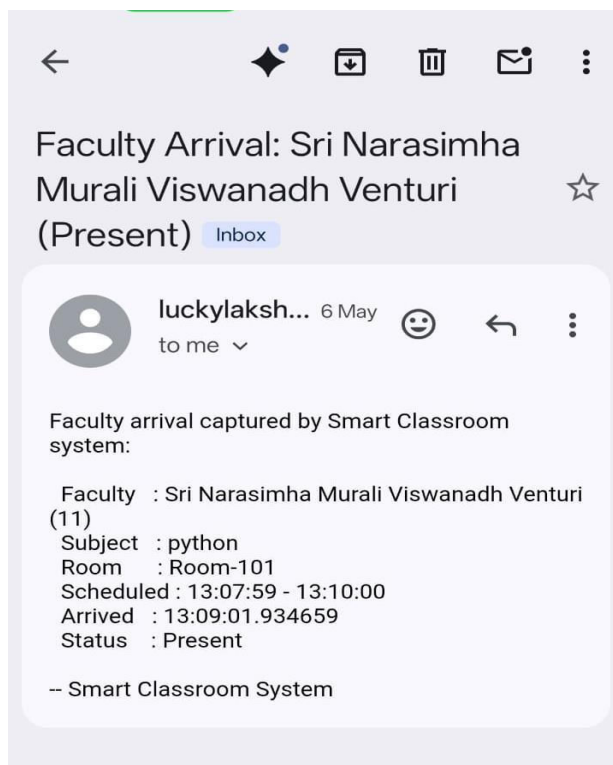
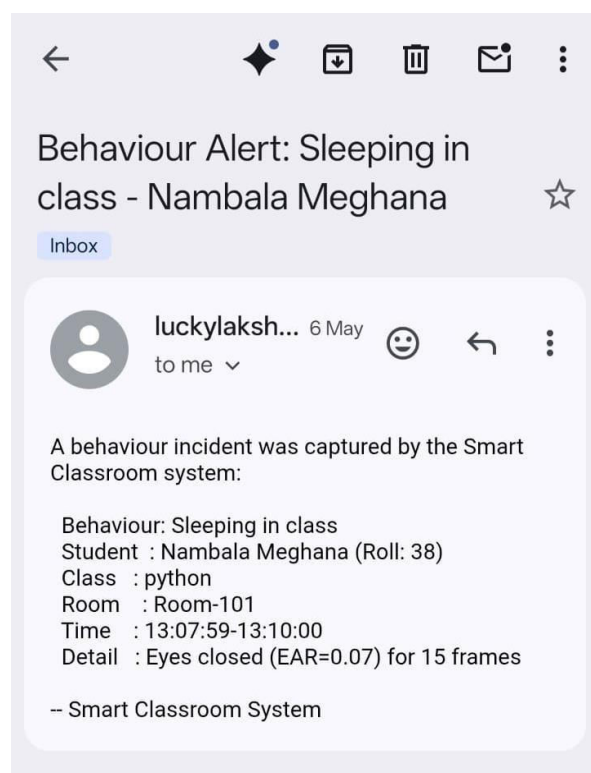


Fig. 4. Behaviour Logs Screen



*Fig. 5. Faculty arrival record*



*Fig. 6. Student Behaviour Alert*

Date	Time	Student	Roll	Subject	Faculty	Status
May 6, 2026	13:08	Nambala Meghana	38	python	Sri Narasimha Murali Viswanadh Venturi	Present

*Fig. 7. Attendance Report Module Screen*

## REFERENCES

- [1] Viola, P., & Jones, M. (2001). Rapid Object Detection using a Boosted Cascade of Simple Features. Proceedings of IEEE Conference on Computer Vision and Pattern Recognition (CVPR).
- [2] Turk, M., & Pentland, A. (1991). Eigenfaces for Recognition. Journal of Cognitive Neuroscience, 3(1), 71–86.
- [3] Ahonen, T., Hadid, A., & Pietikäinen, M. (2006). Face Description with Local Binary Patterns: Application to Face Recognition. IEEE Transactions on Pattern Analysis and Machine Intelligence.
- [4] Schroff, F., Kalenichenko, D., & Philbin, J. (2015). FaceNet: A Unified Embedding for Face Recognition and Clustering. IEEE Conference on Computer Vision and Pattern Recognition (CVPR).
- [5] Taigman, Y., Yang, M., Ranzato, M., & Wolf, L. (2014). DeepFace: Closing the Gap to Human-Level Performance in Face Verification. IEEE Conference on Computer Vision and Pattern Recognition (CVPR).
- [6] King, D. E. (2009). Dlib-ml: A Machine Learning Toolkit. Journal of Machine Learning Research.
- [7] OpenCV Library Documentation. Open Source Computer Vision Library. Available: <https://opencv.org/>
- [8] TensorFlow Documentation. Machine Learning Framework by Google. Available: <https://www.tensorflow.org/>
- [9] Zhao, W., Chellappa, R., Phillips, P. J., & Rosenfeld, A. (2003). Face Recognition: A Literature Survey. ACM Computing Surveys.
- [10] Jain, A. K., Ross, A., & Prabhakar, S. (2004). An Introduction to Biometric Recognition. IEEE Transactions on Circuits and Systems for Video Technology.
- [11] Kumar, N., & Zhang, Z. (2006). Learning-Based Approach to Real-Time Face Detection and Recognition. IEEE Transactions.
- [12] Szeliski, R. (2010). Computer Vision: Algorithms and Applications. Springer.

- [13] Goodfellow, I., Bengio, Y., & Courville, A. (2016). Deep Learning. MIT Press.
- [14] Deng, J., Guo, J., & Zafeiriou, S. (2019). ArcFace: Additive Angular Margin Loss for Deep Face Recognition. IEEE Conference on Computer Vision and Pattern Recognition (CVPR).
- [15] Research Papers on Smart Classroom Systems and AI in Education Various IEEE, Springer, and Elsevier Publications